

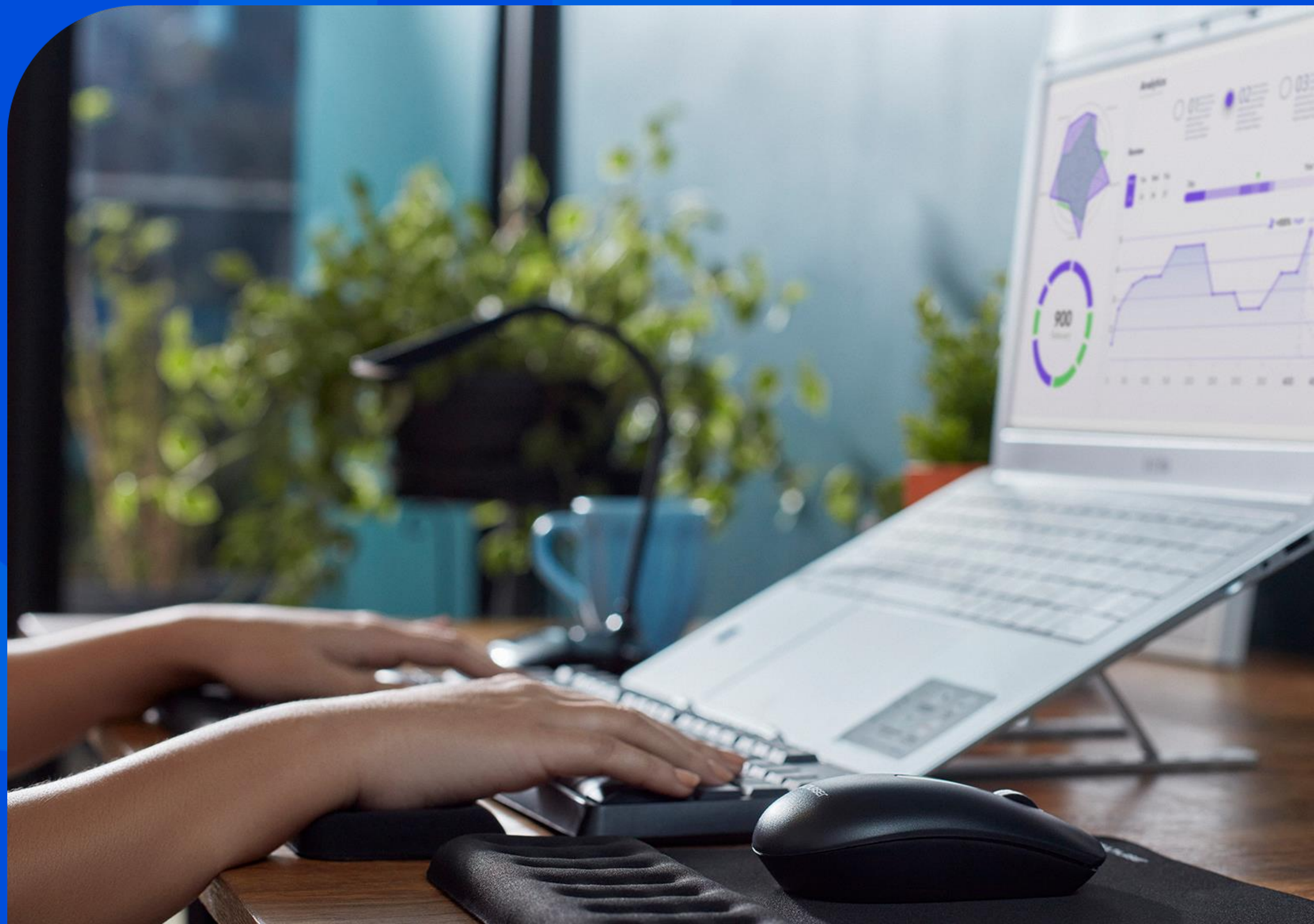
Multi



casa

conectada

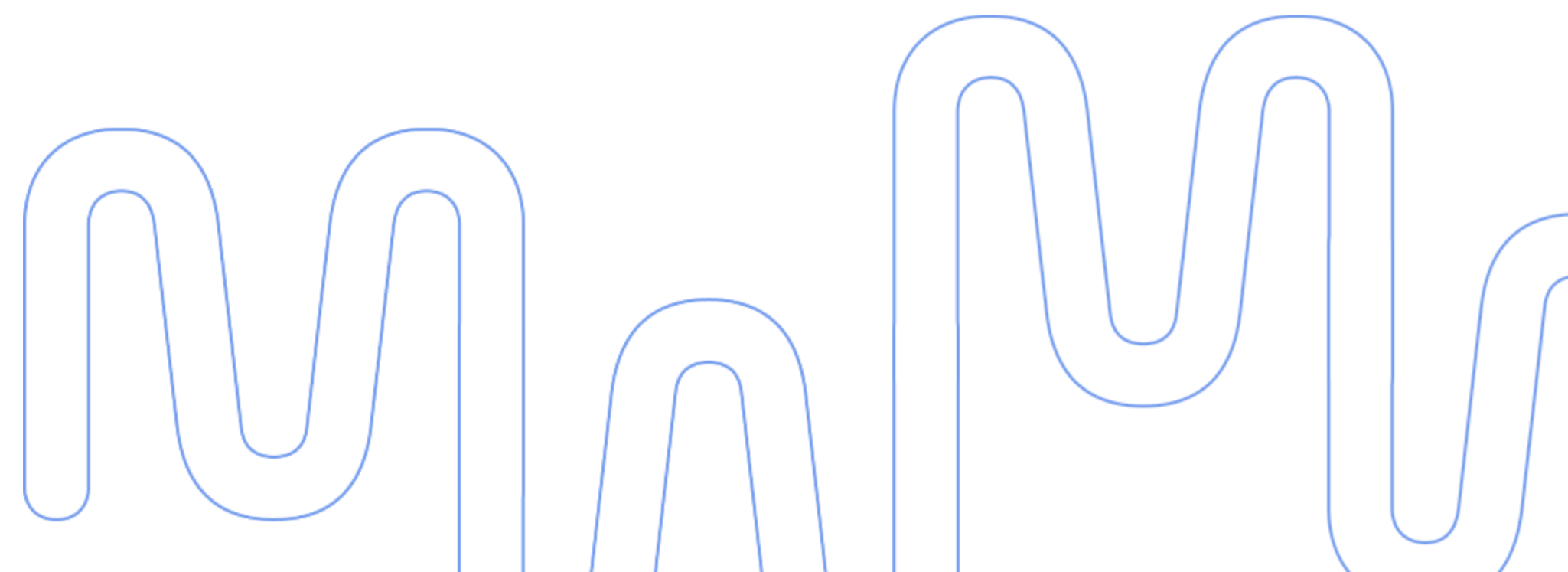
Como realizar o reset forçado na Fechadura (SE233)





- 1° Remova a tampa da bateria
- 2° Pressione o **botão de reset**
- 3° Retire uma das pilhas
- 4° Aguarde 3 segundos e coloque a pilha novamente
- 5° no painel numérico digite o **código temporário** gerado pelo suporte
- 6° Tecele **#**
- 7° Solte o botão de reset
- 8° O sistema será restaurado para o padrão de fábrica (apagará todos os dados)

Realize todo o procedimento pressionando o botão de reset



The image features a solid purple background. In the center, the letters 'nm' are written in a large, white, rounded, sans-serif font. The 'n' and 'm' are connected at the top. Surrounding the central text are several abstract, white-outlined shapes: a large, rounded shape on the left, a smaller rounded shape on the right, and a vertical line-like shape on the far right. The overall design is clean and modern.

nm

Obrigado!